

C O R P O R A T E   S E R V I C E S



HealthDeliver

Powered by



At HealthDeliver & Crisis24 International Medical Services, we're committed to safeguarding your workforce and ensuring your peace of mind. Our services stand out by combining international expertise with a local focus. We understand the unique needs of your industry and offer tailored solutions that prioritise prevention, immediate emergency care, and risk reduction. We build trust through transparent, compliant, and data-driven practices, and our commitment to sustainability and social responsibility reflects our values. When you choose HealthDeliver & Crisis24 International Medical Services, you're choosing a dedicated partner that not only protects health but also secures your success.

### Contact Details

[www.HealthDeliver.Asia](http://www.HealthDeliver.Asia)  
Ph: +66 (0)64 553 9506  
[Info@HealthDeliver.Asia](mailto:Info@HealthDeliver.Asia)

LineID: @HealthDeliver  
WhatsApp +66 (0)64 553 9506

# Crisis24 Security and Medical Assistance



Seamless Assistance Worldwide



We help you prepare so that when a medical or security event occurs, your organization is resilient, and the impact can be mitigated. Crisis24's extensive resources provide 24/7 assistance to protect your personnel wherever they are. From planning and monitoring to fast and rapid responses, we have you covered.

## Holistic Approach

- An end-to-end solution combining security and medical assistance & response.
- 24/7 global assistance and monitoring via our unrivaled Global Operation Centers.
- Operational excellence backed by a proven track record.

## Our Value Proposition

Crisis24's comprehensive and cost-effective global security and medical assistance program can be customized to your requirements, ensuring that your organization achieves its duty of care with simplicity, accuracy, and accountability.

- Full-featured and ready-to-deploy medical and security assistance program.
- Integrated medical and security assistance services as well as unified communication protocols.
- Proven track record of delivering high-quality on-the-ground assistance services via our vetted and accredited network of providers.
- Global reach and around-the-clock assistance and support to all your personnel, whether travelers, expatriates, or local employees.
- Innovative and scalable technology for personnel and managers.
- Proactive 24/7 monitoring of health and security issues worldwide.
- Full compliance to ensure effective duty of care.

## Oil & Gas Industry



**Dr. Worakhan Phan-udom**

Top Side Medical Director

- A dedicated 24/7 call centre of medical experts who have extensive Oil & Gas experience
- Highest technology of recorded incident management
- Offshore paramedic deployment
- On rig clinic and consumables management
- Supply chain services
- Medical evacuation management
- Medical facility deployment
- On-shore medical personal deployment
  - Doctors
  - Nurses
  - Paramedics

Our 24/7 Topside Medical Support service offers a direct line for the on-board Medical Responsible personnel or those at remote sites to our Emergency Response Physicians. This connection ensures that our Topside Medical Support team can promptly assist patients, whether they're facing medical emergencies, seeking medical advice, or dealing with routine medical issues.

Leveraging our vast experience in remote healthcare, we strive to enhance the well-being of individuals working in isolated areas.

We customise our services to suit the specific environments in which the crew operates, ensuring a tailored approach to healthcare."

## WE ARE ALWAYS READY

At the core of our always-on Actionable Risk Management approach are our Global Operations Centers (GOCs) staffed 24/7 by intelligence analysts and security experts, supporting clients and driving our technology.



Our exceptional intelligence capabilities support and underpin our technology, operations, and responses. With the largest analyst team in the private sector, your organization is backed by our industry-leading regional and subject matter experts, providing you the dynamic intelligence you need, when you need it. From 24/7 monitoring and alerting of worldwide incidents to daily briefings and bespoke risk reports, our extensive intelligence enables you to make high-quality and high-impact decisions with confidence.

# Manufacturing/ Mining Construction

---

At HealthDeliver, we pride ourselves on the exceptional level of professionalism and deep understanding we bring to deploying medical services across a diverse range of sectors, including manufacturing, mining, construction and other heavy industries. Our team comprises seasoned professionals who are not only experts in medical care but also possess a profound grasp of the unique challenges and demands of these industries.

We recognise that each sector has its own set of risks and operational intricacies. That's why we've meticulously developed our medical services to align seamlessly with the operational rhythms of each industry we serve. Whether it's addressing the rigorous demands of a mining operation or navigating the complex safety protocols of

a manufacturing plant, our medical services are designed to provide swift, effective, and context-sensitive support.

Our commitment extends beyond mere service delivery. We are dedicated to fostering a safe and healthy work environment through our services, helping to mitigate risks and ensuring that health and safety are ingrained in the industrial culture. This commitment to excellence and our tailored approach has established us as trusted partners in the heavy industry sector, setting a benchmark for quality, responsiveness, and an in-depth understanding of our client's needs

We assist our clients in fulfilling their Duty of Care obligations towards their employees by providing comprehensive support.

- 24/7 call centre for medical experts
- Supply chain services
- Medical evacuation management
- Medical facility deployment
- Annual onsite health checks
- Vaccinations
- Telehealth services
- Medical personal deployment – permanent and part-time
  - Doctors
  - Nurses
  - Paramedics





## OUR VALUE PROPOSITION

# Moving swiftly from planning to response is key. That's where Crisis24 comes in.

In today's world, your business faces both unprecedented risk and unprecedented opportunity. In our highly volatile economic, social, and political climate, a crisis can be one small disturbance away.

We are the only true end-to-end security experts in the market. We help you plan and prepare so that when a threat event occurs, your organization is resilient, and the impact can be mitigated. Yet risk

cannot be eliminated entirely, and when action is required, our extensive worldwide expertise and large-scale on-the-ground capacity can provide rapid and actionable risk management.

Crisis24 is your single solution for integrated risk management, powered by always-on intelligence, and backed by global response capabilities.



## 120,000+

Security professionals

## 45+ countries

With operations & business network

## 35,000+ clients

Worldwide

## 500+ locations

Worldwide

# Corporate Medical and Risk Services

HealthDeliver stands at the forefront of providing unparalleled services in security, risk management, and healthcare. Our offerings are not just comprehensive; they are the best in the industry, designed to meet the highest standards of excellence and tailored to cater to the specific needs of our clients.

Crisis24 is a global leader in the provision of international medical, security and travel risk management services. We are trusted to look after the wellbeing of millions of business travelers, expatriates, and their families in every country of the world on behalf of Multi-National Corporations, Governments, NGO's, and Insurers.

Our highly experienced teams provide a full range of international medical, psychological, and occupational health services, and we are very well versed in managing the health and welfare needs of populations in remote and challenging locations.

When on the ground assistance is required, Crisis24's Assistance team calls on our accredited network of providers spanning the globe, which is managed by our dedicated Medical Network team. Crisis24's network provides access to over 1,110,000 medical and logistics providers, including over 15,000 hospitals, in 194 countries.

## World's Most Comprehensive Security and Risk Management Platform

Our platform is unrivalled in scope and efficacy, offering a robust suite of tools and insights to safeguard your operations. Businesses benefit from enhanced protection against a myriad of risks, ensuring continuity and resilience in the face of unforeseen challenges.

## Annual Health Checks

Proactive health management is key to a thriving workforce. Our comprehensive annual health checks are designed to detect and address potential health issues early, ensuring your employees remain at the peak of their health and productivity.

## Corporate Travel Risk Management:

We specialise in mitigating travel-related risks, providing your travelling workforce with the assurance of safety, real-time support, and guidance, no matter where their business takes them. This not only ensures the wellbeing of your employees but also protects your organisational interests abroad.

## Corporate Travel Risk Management:

With our thorough vaccination programs, we protect your employees from preventable diseases, thereby minimising absenteeism and healthcare costs. This proactive approach is crucial in maintaining a healthy, robust workforce ready to tackle the challenges of your industry.

At HealthDeliver, we don't just provide services; we deliver peace of mind, enhanced safety, and a healthier, more productive workforce. Our commitment to excellence in these key areas has cemented our reputation as the best in the business, offering tangible benefits that propel your company forward

## Tailored Executive Home Healthcare Packages

Recognizing the unique healthcare needs of corporate executives, we offer bespoke home healthcare solutions that promise convenience, privacy, and top-tier medical attention. This service enhances productivity and peace of mind by ensuring health is never a barrier to executive performance.



# Medical Assistance Services

## Pre-travel - Prepare and Plan

- Access to 24/7 medical advice
- travel vaccination recommendations
- Pre-deployment medical screening
- Pandemic planning
- Medical emergency response planning
- Timely medical alerts

## During Travel - 24/7 Support

- Medical referrals to doctors, clinics, hospitals, dentists
- Arrangement of medical appointments
- Global medical network/access to credentialed care
- Medical monitoring while overseas
- Medical expense management
- Dispatch of medication
- Remote site medical support

## Emergency Support

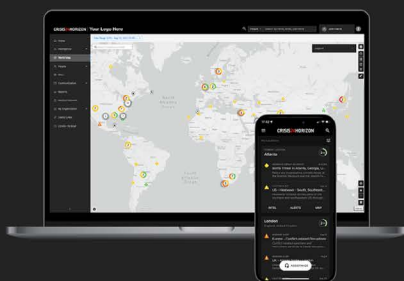
- Medical evacuation (air ambulance)
- Medical repatriation (commercial aircraft)
- Provision of medical staff/escorts
- Bed-to-bed patient movement

## Post-Travel - Ongoing Care

- Travel-related illness management
- Return to work/deployment management
- PTSD and mental health support

## Meet CRISIS24HORIZON

Purpose-built to be the industry's most comprehensive global security and risk management platform.



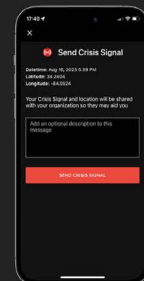
### BEYOND AWARE

Track all people and sites—at home or abroad—via a single interface.



### BEYOND ALERT

Get real-time risk intelligence unrivaled in quality and relevance.



### BEYOND CONNECTED

Offer two-way communications like security checks-in and panic beacons via app.



# Complete School Medical and Risk Services



We are recognised as the best in equipping schools with top-tier risk management and healthcare services. Our dedication to student and staff well-being is reflected in our unparalleled offerings.

## World's Most Comprehensive Risk Platform for School Excursions

Our platform is the gold standard for ensuring the safety and security of school excursions. With a suite of advanced tools and insights, we empower schools to conduct trips with confidence, knowing that every potential risk is meticulously managed.

## Pre-travel Risk Assessment and Planning

We map out all medical and emergency services before trips, ensuring every conceivable health and safety aspect is addressed. This preemptive approach translates into safer and more educational experiences for students.

## 24/7 Onsite First Point-of-Call Services

Our around-the-clock onsite services mean immediate, professional medical attention is always available, safeguarding students and staff at all times.

## Annual Health Checks

Regular health assessments for students and staff promote a culture of wellness, catching potential issues early and fostering a healthier school community.

## Vaccinations

Protecting against preventable diseases, our vaccination programs are integral in maintaining a healthy learning environment, reducing absences, and ensuring that both learning and teaching can proceed uninterrupted.

## On-site or at-home Work Permit Medicals

We facilitate the seamless integration of healthcare into your valuable facility's life. Ensuring that teachers' and staffs' medical needs are met without disrupting

## Student and Employee Onsite Dental Services

Oral health is crucial to overall well-being, and our onsite dental services make it convenient for students and staff to receive top-notch dental care.

## Nurse/Paramedic Services – Permanent, On Call, Excursion Travel Based

Whether it's day-to-day medical needs or specific excursion-related requirements, our nursing and paramedic services provide comprehensive, professional healthcare support tailored to the school environment.

At HealthDeliver, we don't just serve schools; we partner with them to create a foundation of safety, health, and well-being that benefits everyone in the educational ecosystem, paving the way for a more secure, healthier, and brighter future for all.

# Customer Feedback

**Matt Zavadil** ★★★★★

Efficient | Professional | Rapid Blood Test Results - Awesome service at great value...

**Patrick Loram** ★★★★★

Fantastic service and great value. Booked ATK COVID tests with fit to fly certificates. Great communication, professionalism and on time results. All without having to leave home. Highly recommended

**Stephanie Weddle** ★★★★★

Khun Chokun is a warm & lovely woman. I'm very wary of using a nanny but having no support in Thailand, I'm happy I can trust her. My baby slept well and played with her. There's many differences between cultures regarding babies so it can be confusing here, I'm looking forward to creating the best care for my daughter and will see Chokun again.

**Local Guide** ★★★★★

She did a kind and accurate examination. If you want a loose test, look elsewhere. Thank you so much for your kind response even though I changed the schedule urgently due to my mistake. You can continuously check the progress and reservation through Kakao Talk or email.

Thailand's Number 1 rated in-hotel or home healthcare partner 4.9 Star Google rating out of 5 with over 14,000 customer ratings. ★★★★★

The screenshot displays the HealthDeliver website interface. At the top, there's a navigation bar with 'Home', 'Services', 'Products', 'Our Doctors', 'Search Products', and 'Cart'. The main banner features the text 'Best Consultancy Services In Medasia' with a 'Check Now' button and a large image of a doctor. Below this, the 'Highlighted Specialist' section shows a row of six doctor profiles, each with a name and specialty. The 'Care Categories' section is a grid of 20 icons representing various medical services: Women's Health, Men's Health, Anti-Aging, Performance Medicine, Stroke Care, Diabetes, Sexual Health, Children's Health, General Practice, Cancer Care, Vaccinations, Wellness, Nutrition, Sleep Disorder, and Health Screening. The 'Our Facilities' section includes images for 'Our Doctors', 'Laboratory', 'Pharmacy', and 'Stores'. The 'Doctor's Video' section shows a row of five video thumbnails for different doctors. Finally, the 'Our Blogs' section displays a row of five blog post thumbnails with dates.

# HealthDeliver

---

In an era where health is not just a personal concern but a corporate priority, HealthDeliver.Asia stands as a beacon of excellence, offering a total care solution tailored for business executives and their families. Our platform transcends traditional healthcare boundaries by integrating top-tier home services delivered by registered nurses, ensuring that quality care is not just promised, but meticulously delivered to your doorstep.

## Why HealthDeliver.Asia is the Quintessential Choice for Corporate Healthcare:

- Premier Home Healthcare Services: Our registered nurses, trained to the highest standards, bring professional medical care into the comfort and privacy of your home or office. This is not just a service; it's a commitment to your health and convenience.
- A Symphony of Quality and Expertise: Quality is the fabric of our platform, woven into each service we provide. From the calibre of our medical professionals to the precision of our laboratory tests, we leave no stone unturned in ensuring excellence.
- Designed for the Corporate Lifestyle: We understand the constraints and demands of corporate life. Our services are moulded to fit into your hectic schedule, ensuring healthcare does not disrupt, but rather enhances your productivity and well-being.
- Comprehensive and Integrated Care: Beyond consultations, our platform offers a holistic healthcare ecosystem, encompassing e-pharmacy, teleconsultation, and more, all synergized to provide a seamless health management experience.
- Unwavering Commitment to Privacy: Your privacy is our top priority. We uphold the strictest security measures to protect your sensitive medical information, ensuring peace of mind for you and your family.

HealthDeliver.Asia is not just a healthcare platform; it's a testament to our dedication to serving business executives with an unparalleled level of home healthcare. Our mission is to offer a total care solution that aligns with your lifestyle, preferences, and needs, setting a new benchmark for executive healthcare.

Experience the fusion of convenience, quality, and professional care with HealthDeliver.Asia – where your health is our highest calling.





# CASE STUDIES

---



## People Risk

### Executive Protection for High Profile Politician

A high-profile former politician in the Americas was hosting a private event and approached Crisis24 to plan and provide professional security. A complete security plan was developed that combined ground assets and technology to ensure maximum protection, including comprehensive journey management planning, a 24/7 executive protection team of more than 40 personnel equipped with firearms and SUVs, real-time personnel tracking capabilities, and dynamic assessments of present and potential threats before and during the event.



## Organizational Risk

### Bespoke Intelligence Support & Risk Management for an International NGO

An international NGO with more than 10,000 staff from 170+ countries and offices in over 130 locations needed a duty of care program to ensure the safety and wellbeing of its people and assets, including in challenging environments. We implemented an intelligence and risk management approach that ensured a comprehensive view of threats to their organization and people, and a method of identifying personnel potentially at risk during an incident. The solution included an inhouse team of dedicated intelligence analysts and security experts who took direct responsibility for managing all aspects of their Security Operations Center (SOC) utilizing Crisis24 technology.



## Asset Risk

### Threat Assessment for Global Engineering Client

A global engineering client operating on a high-profile oil and gas project in North Africa, an endeavor with an elevated threat of crime and terrorism, required a detailed Security Risk Assessment of physical and technical measures at the site level. Following an initial desk-based Threat Assessment of our global capabilities and network were leveraged to identify a threeperson consulting team to deploy to the project location for site familiarization and stakeholder engagement. Crisis24 submitted a comprehensive security risk assessment compliant with the project's specifications.



## Cyber Risk

### Digital Risk and Contingency Planning

We were contacted by a financial institution that assists governments and private companies and was heavily dependent on their IT systems. Yet their disaster recovery plans were untested and potentially vulnerable. Crisis24 reviewed all their plans and material related to business continuity, with a strong focus on disaster recovery. We developed and launched a full day simulated cyber incident using the client's actual IT network and architecture to create a customized and realistic scenario. Our initiative helped our client identify existing gaps and weaknesses in their disaster recovery plans so they could respond with the appropriate resources and support.